



## CAP Inflation Request

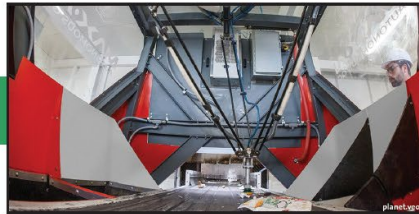
### Complete Materials Recovery Facility

HF-3944 SF-4289

Steve Vrchota, Director

612-747-4996 or [steve@popedouglasrecycle.com](mailto:steve@popedouglasrecycle.com)

Thank you for your support in getting the Pope/Douglas Solid Waste Management (PDSWM) Project funded in the 2023. Construction on the buildings and infrastructure is well underway. The project was projected to be funded during the bonding year of 2022 and was finally funded in late May of 2023. Although PDSWM has worked to reduce the scale of the project and control costs and reduced the initial bid cost by over \$1 Million dollars, hyper-inflation has continued to occur from the project submittal to implementation. The delay in approving Phase 2 of the project until May of 2023 has exposed the project winter construction conditions and a volatile equipment supply market. Equipment suppliers have increased their pricing by more than 10% since the original bid.



Check out our vision



[popedouglasrecycle.com](http://popedouglasrecycle.com)

Inflation costs on building construction from the Associated General Contractors from the time the project costs were submitted in early 2022 until the project was able to be bid was over 21% with a 5% increase just during the legislative session in 2023. Even with a mild winter, the late start of the project incurred over \$500,000 in winter construction costs. (See attached March AGC Report)

PDSWM is working to complete our project with the purchase of processing equipment to recover recyclables out of the waste stream and to adequately equip a single sort recycling processing line. We are at a crossroads and without additional funding we will be forced to significantly reduce the scope of our equipment and the outcomes for our project. ***PDSWM is looking for \$1.9 Million dollars to be able to meet the original recycling and greenhouse gas reductions of the project.***



## Glacial Ridge Composting Facility

Opened September 2022

- Source Separated Organics Processing
- Yard Waste Management
- Reduces GHG by 1,320 tons of CO<sub>2</sub>e per year.



## Environmental Center

Projected Opening Spring 2024

- Household Hazardous Waste
- Problem Materials
- Waste/Recycling Education

