

Recycling at Pope Douglas Solid Waste Management (sorted by group)

The following is a list of items accepted at the Pope/Douglas Solid Waste Management - Recycling Drop Center and Mobile Recycling Trailer.
If you have curbside recycling service, please contact your licensed hauler for information on what they accept for recycling and how to prepare/sort it.

Aluminum Sort (keep tin separate)

Tin Sort (keep aluminum separate)

YES:

- Food/beverage cans and bottles
- Empty and rinsed
- Whole or flattened
- Labels can stay on (prefer removed)



Glass Sort

YES:

- Food/beverage bottles and jars
- Labels stay on

NO:

- Caps/lids
- Drinking glasses, mugs, dishes, cookware, pottery, vases, window/mirror glass, etc.



Corrugated Cardboard/etc Sort

YES:

- Flattened corrugated boxes
- Flattened beer/pop/etc boxes
- Flattened boxes that come from the **fridge**
- Brown paper grocery bags

NO:

- Boxes that come from the **freezer**
- Office Paper/Newspaper/Magazines/Boxboard
- Wax coated items (i.e. produce boxes)
- Cartons (i.e. soy milk, juice boxes, egg substitute)



Paper/Boxboard Sort

YES:

- Newspapers/Inserts/Magazines/Phonebooks
- Mail/envelops/office/school papers
- Shredded paper in closed paper bag
- Egg cartons—NO Styrofoam
- Boxboard includes: **FLATTENED** cereal/tissue/pasta/shoe/etc boxes



NO:

- Boxes that come from the **fridge or freezer**
- Wax coated items (i.e. produce boxes).
- Cartons (i.e. soy milk, juice boxes, egg substitute).
- Bright/neon paper
- Photo paper
- Brown Kraft/bubble wrap lined envelopes
- Hard/soft cover book
(*torn out book pages can be recycled*)



#1, #2 Plastic Sort

YES:

- Containers and bottles marked on the bottom with one of the plastic recycling triangle symbols
- Caps/labels stay on
- 5 gallons and less w/metal handles removed
- Well-drained oil bottles w/caps left on ok
- Triple rinsed pesticide/chemical/etc bottles ok
- #1 or #2 clamshells/cups/deli containers/etc

NO:

- Hoses, toys, etc



Plastic Recycling NOTE:
#1—#2 Plastics must be **kept separate** from #3—#6 Plastics for recycling at PDSWM

Scrap Metal Sort

YES:

- Scrap metal/metal items 95% metal or more
- Metal tools, kitchen utensils, lawn chairs (with cloth/vinyl removed), clothes hangers, screws, nails, metal toys, silverware, fence, etc

NO:

- Washers, dryers, stoves, refrigerators, water softeners, water heaters, dehumidifiers.
- Insulated doors/mattresses

Wire Sort

YES:

- Wires, extension cords
- Holiday/Christmas light strings
- Telephone wires
- Electrical cords from electronic devices.



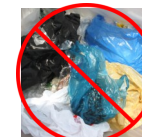
#3, #4, #5, #6 Plastic Sort

YES:

- Containers and bottles marked on the bottom with one of the plastic recycling triangle symbols
- Triple rinsed pesticide/chemical/etc bottles ok
- Caps/labels stay on
- Corrugated plastic election-style signs
- #3-#6 clamshells/cups/deli containers/etc

NO:

- #7 plastics or Styrofoam
- Plastic bags/packaging wrap/etc
- Plastic shopping bags/stretch plastic/packaging wrap/etc



Plastic bags recycling at several grocery stores and big box retail outlets

Accepted at Pope Douglas Recycling Center in Alexandria

Ballasts (PCB and Non-PCB): Bring to *HHW Facility for proper disposal and recycling.

Batteries: Automotive batteries accepted in Recycling Center Area. Rechargeable, button, and lithium batteries go to *HHW Facility.

Fluorescent Bulbs: Bring to *HHW Facility or Tom Kraemer Inc for free. Accepted from customers of ALP, REA, Stearns, Xcel, Agralite only. Contact **PDSWM for delivering quantities over 50 bulbs

Media Recycling: Bring to *HHW Facility. VHS, cassette and 8-track tapes, LP records, Laserdiscs, DVD's, CD's and Blu-ray discs.

Oil and Filters: Used oil must be in a pourable size container of 5 gallons or less. It may be mixed w/gasoline. *Not accepted: Oil contaminated with hydraulic or brake fluid, water, antifreeze, pesticides, etc.*

Scrap Metal: Scrap metal or metal items that are 95% metal or more. Metal tools, utensils, lawn chairs (w/cloth or vinyl removed), hangers, screws/nails, fencing, etc. *Not accepted: Appliances, water softeners, water heaters, dehumidifiers. If unsure, call.*

Wire: Wire, extension cords, holiday/Christmas light strings, electrical cords from electronic devices.

Yard Waste: Spring, Summer, and Fall Only. Leaves, grass clippings, garden debris accepted ONLY. Bagged yard waste must be emptied from bag into the container. *Not accepted: Twigs, branches, tree stumps, wood chips.*

**HHW Facility = Household Hazardous Waste Facility*

***PDSWM = Pope Douglas Solid Waste Management*

Electronics/E-waste: **Not accepted at PDSWM**

Recycling options at Tom Kraemer Inc in Glenwood or Waste Management or Alex Rubbish & Recycling in Alex

Household Hazardous Waste: Informational brochures available at PDSWM or on website.

Recycling Trailer Schedule

Pope County—May through September

TUESDAYS—9am to 5pm (Tom's Food Pride—Glenwood)

THURSDAYS—9am to 5pm (Tom's Food Pride—Starbuck)

(Please see other side of brochure for items accepted at trailer)



Recycling Center — Alexandria

8:00 am to 5:00 pm Monday through Friday

9:00 am to 2:00 pm Saturday

Closed Sundays

Household Hazardous Waste Facility

8:00 am to 12:00 pm and 1:00 pm to 4:00 pm

Monday through Friday

Closed Saturdays and Sundays

Pope Douglas Solid Waste

Located at the corner of 22nd Ave East and Jefferson Street (East of 3M)—2115 Jefferson Street, Alexandria

320-763-9340

800-972-6318

www.popedouglasrecycle.com

Pope/Douglas Solid Waste Management



Recycling Center & Waste Info